



# Welcome!

Greg Bentley, CEO







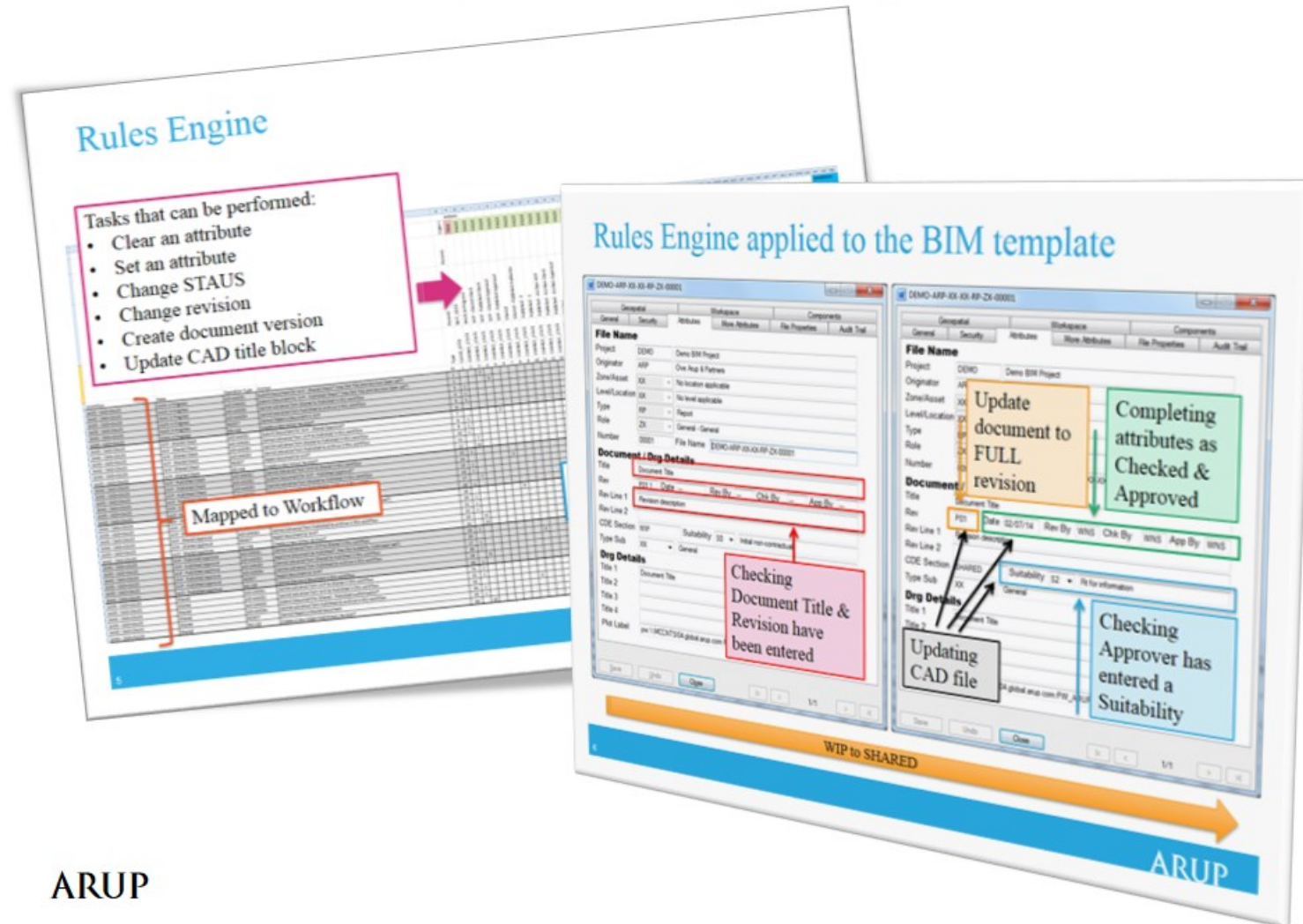
# 2015 *Be Inspired* Finalists and Winners from the U.K.





# Arup ProjectWise BIM Template.

ProjectWise BIM Project Template



2015 *Be Inspired* Finalist:  
Innovation in Project Delivery

ARUP

# Track Access Services Limited

## Laser Positional Video Survey for Crossrail West



2015 *Be Inspired* **Finalist:**  
Innovation in Rail and Transit



# Network Rail LADS Programme



2015 *Be Inspired* Award **Finalist**  
Innovation in Asset Performance

# 2015 *Be Inspired* Award Innovation in Building



Robin Partington and Partners  
One Merchant Square  
London, United Kingdom





# 2015 *Be Inspired* Award

## Innovation in Rail and Transit

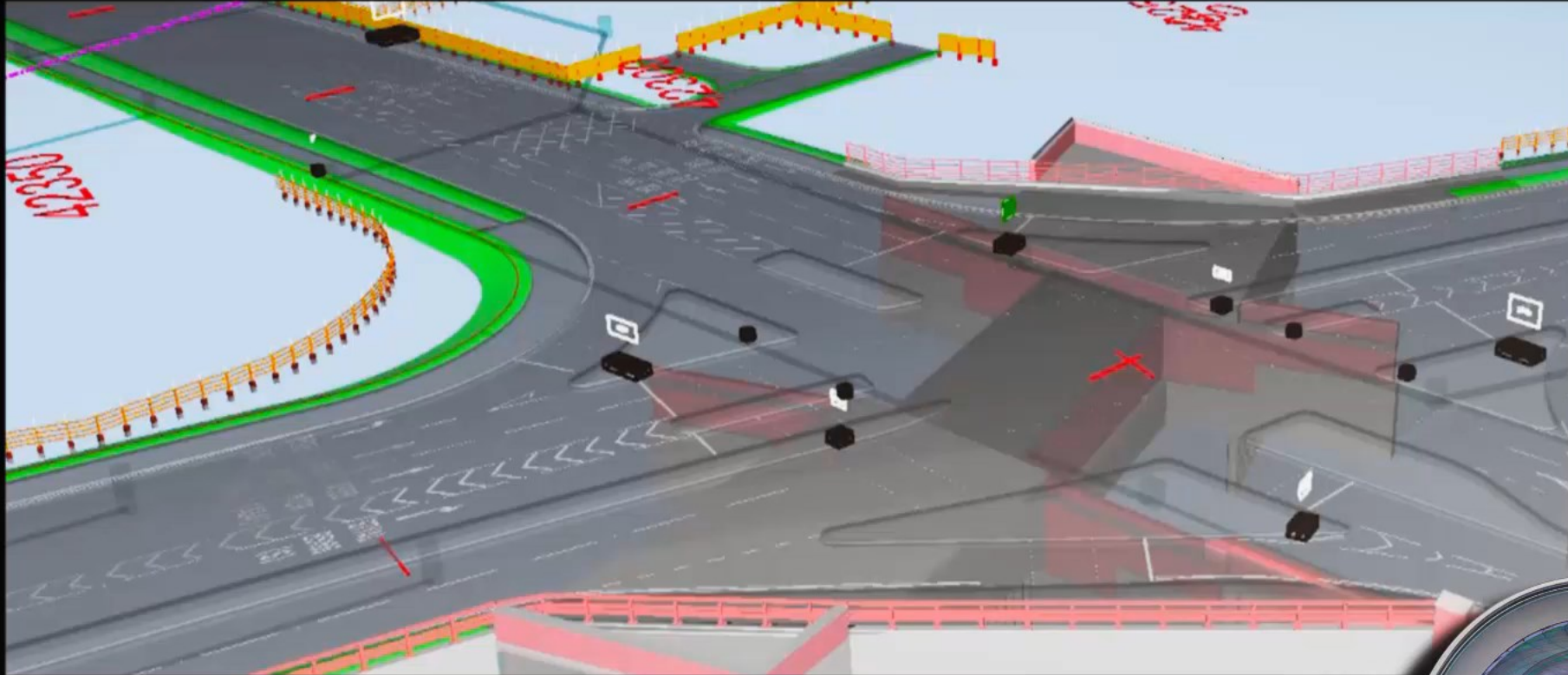


London Underground Ltd  
Bond Street to Baker Street Tunnel Remediation Project  
London, United Kingdom





# 2015 *Be Inspired* Award Innovation in Roads



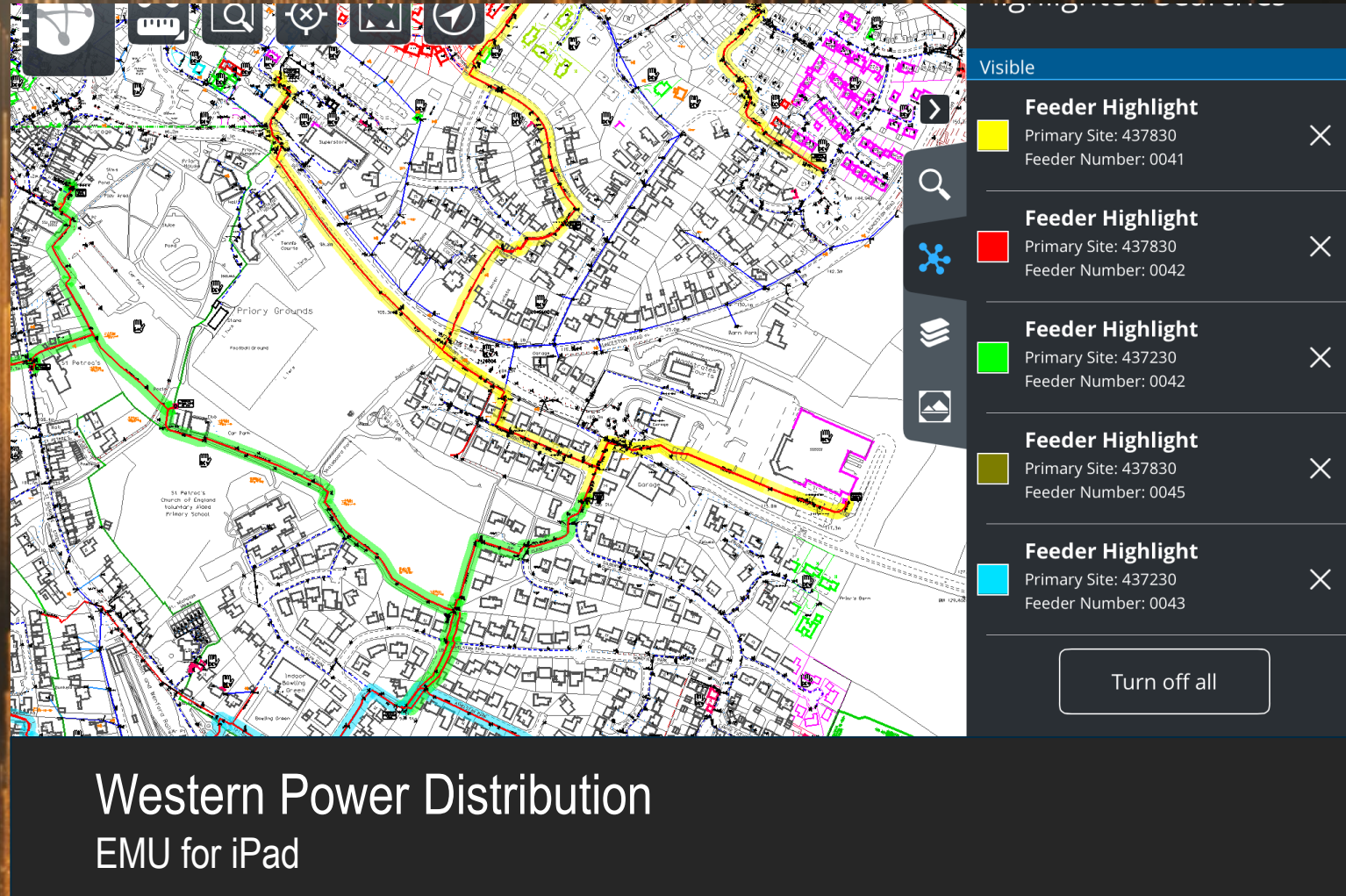
Grontmij  
A6 to Manchester Relief Road  
Stockport, Manchester and Cheshire, United Kingdom





# 2015 *Be Inspired* Award

## Advancing Information Mobility in Operations





News Release

Press Contact:

Ron Kuhfeld

+1 610 321 6493

[ron.kuhfeld@bentley.com](mailto:ron.kuhfeld@bentley.com)

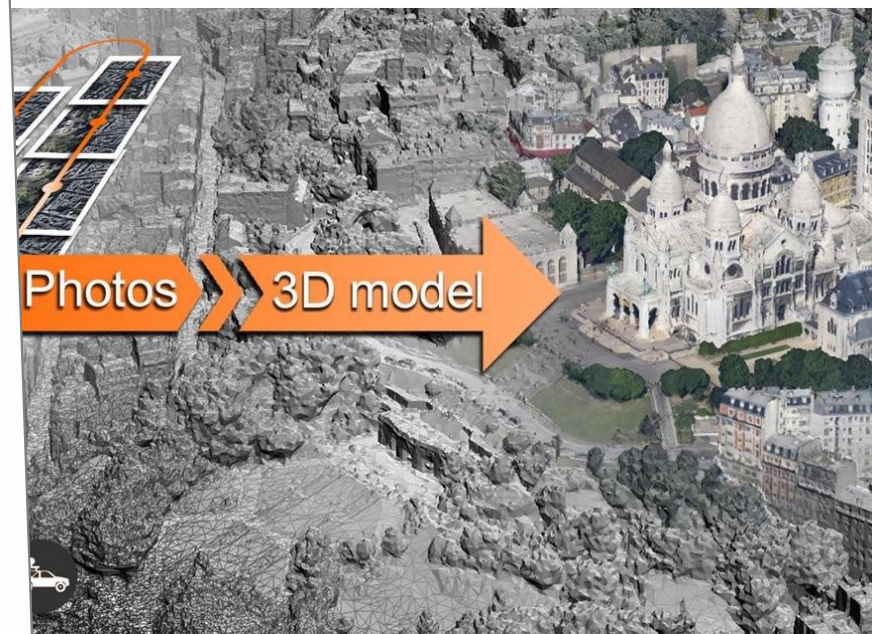
Follow us on Twitter:

[@BentleySystems](https://twitter.com/BentleySystems)

## Bentley Acquires Acute3D to Advance *Reality Modeling*

*To Align Design Modeling and Construction Modeling with Existing Conditions' Context  
– for Every Infrastructure Project and Asset*

ORLANDO, Fla., U.S.A. – 19<sup>th</sup> Annual ARC Industry Forum – Feb. 10, 2015 – Bentley Systems, Incorporated, the leading company dedicated to providing comprehensive software solutions for *sustaining infrastructure*, today announced that it has acquired France-based Acute3D, provider of *Smart3DCapture* software for *reality modeling*. Through *reality modeling*, observations of existing conditions are processed into representations for contextual alignment within *design modeling* and *construction modeling* environments. Rapid technology advancements in scanning and photography – and especially the burgeoning application of unmanned aerial vehicles (UAVs) for these purposes – are making the capture of such observations broadly and continuously





News Release

Press Contact:

Ron Kuhfeld

+1 610 321 6493

[ron.kuhfeld@bentley.com](mailto:ron.kuhfeld@bentley.com)

Follow us on Twitter:

[@BentleySystems](https://twitter.com/BentleySystems)



## **Bentley Introduces *ContextCapture*, Supporting *Reality Modeling* for Infrastructure Project Delivery and Asset Performance**

*Software Speeds and Simplifies the Capture of Real-world Context*

LONDON – The *Year in Infrastructure 2015* Conference – 2 November 2015 – Bentley Systems, Incorporated, a leading global provider of comprehensive software solutions for *advancing infrastructure*, today announced General Access to its new [\*ContextCapture\*](#) offering. *ContextCapture* is Bentley's first product release of the Acute3D software technology acquired earlier this year. The software is ideally suited for any organization that could apply 3D models of real-world context to benefit infrastructure design, construction, or operations.

... ContextCapture users can easily produce high resolution 3D models of existing





News Release  
Press Contact:  
Ron Kuhfeld  
+1 610 321 6493  
[ron.kuhfeld@bentley.com](mailto:ron.kuhfeld@bentley.com)  
Follow us on Twitter:  
[@BentleySystems](https://twitter.com/BentleySystems)

## **Bentley Systems Introduces *LumenRT CONNECT Edition Subscription***

*Empowering Infrastructure Professionals to Develop 'Environmentally Enlivened'  
Designs While Streamlining Their Ability to Communicate  
Winning Design Stories to All Stakeholders*

PITTSBURGH, Pa., U.S.A. – 57<sup>th</sup> Annual IHEEP Conference – Sept. 16, 2015 – Bentley Systems, Incorporated, a leading global provider of comprehensive software solutions for *sustaining infrastructure*, today introduced its new [\*LumenRT CONNECT Edition\*](#) subscription. With this innovative offering, infrastructure professionals need no longer become computer graphics experts to integrate life-like digital nature into their simulated infrastructure designs and create high-impact visuals for stakeholders. Bentley users engaged in the capture of existing conditions to provide context for their designs can further benefit from *reality modeling* “enlivened” with digital nature. The new subscription includes Bentley’s [\*LumenRT\*](#) software plus Azure-cloud access to rich content libraries containing plants, trees, people, vehicles, architectural objects, civil



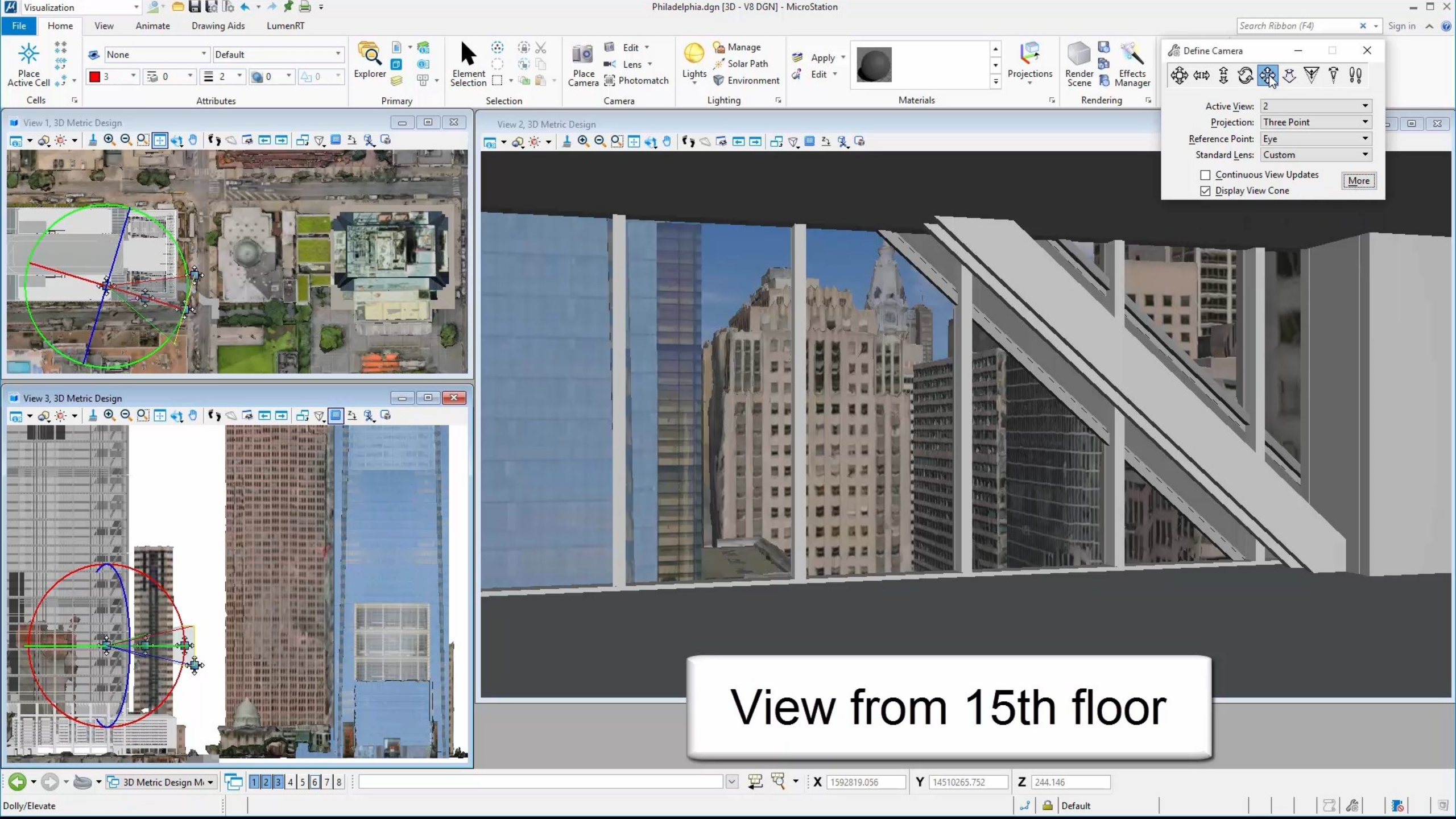
Courtesy of Comcast and Foster + Partners





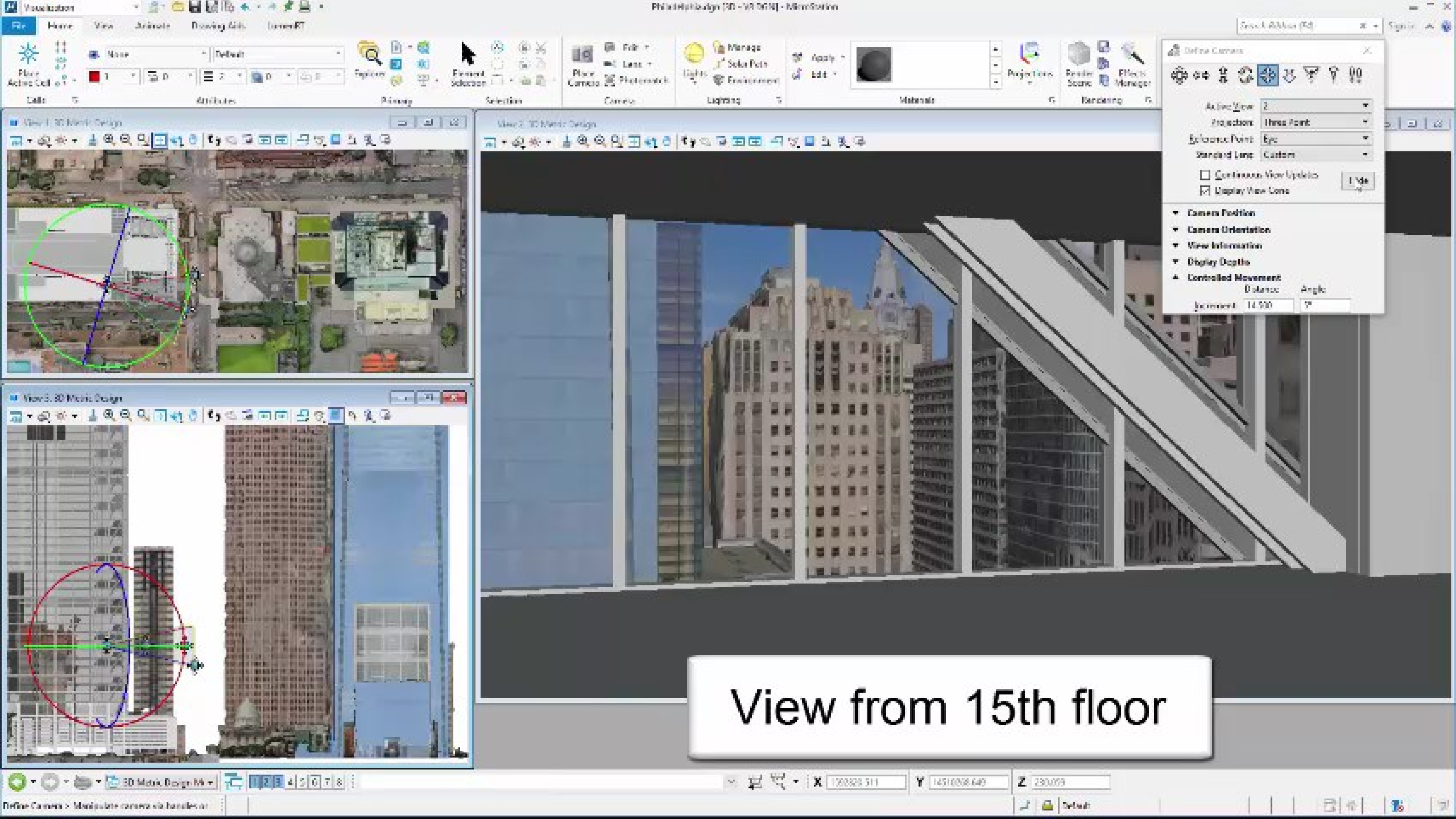
Courtesy of Comcast and Foster + Partners





View from 15th floor





Define Camera

Active View: 2  
Projection: Three Point  
Reference Point: Eye  
Standard Lens: Custom

☐ Continuous View Updates  
☒ Display View Cone

Camera Position  
Camera Orientation  
View Information  
Display Depth  
Controlled Movement

Distance	Angle
Increment: 14.500	7°

View from 15th floor



# CONNECT Edition Applications Calendar

Now	16Q1	16Q2	16Q3	16Q4
Navigator	ConceptStation	ConceptStation	gINT	AECOsim
OpenRoads Navigator	gINT	OpenRoads		OpenRoads
Structural Navigator				
SACS				
Structural (RAM STAAD)				
SITEOPS				
Scenario Services				

Green = Early Access  
Blue = General Access







Thank you!